



Multiply your savings potential with evidence

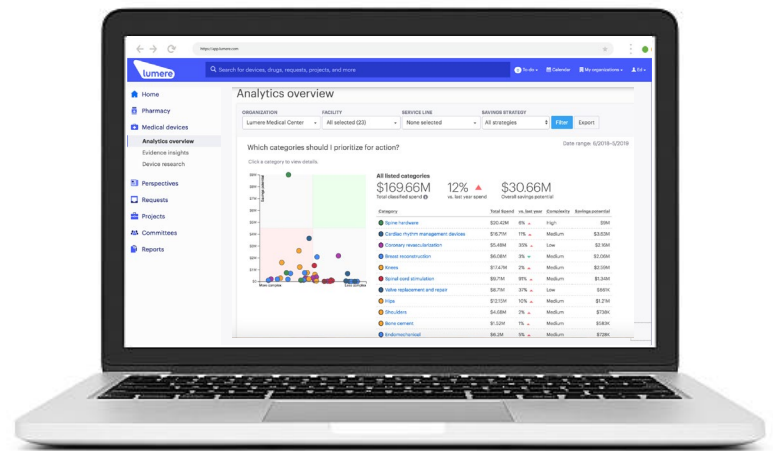
Lumere's web-based Category Optimization uses data pulled directly from your health system to provide evidence-based savings strategies, spend and physician utilization insights, and tracking capabilities to ensure accuracy and compliance.

Accelerate strategic sourcing initiatives

- **Evaluate savings opportunities** across 45 categories of physician preference items to prioritize the highest financial impact.
- **Compare clinically and functionally similar devices** to drive evidence-based conversations that put the focus on patient care.
- **Identify drivers of supply costs and physician variation** at the case level and determine whether evidence supports that variation.
- **Determine if outcomes data aligns with evidence**, and gain visibility to outcomes that affect key financial metrics.
- **Assess benchmarks for implant constructs** to guide the appropriate utilization of complex, premium-priced technology.
- **Access objective medical device experts** to develop organization- and category-specific sourcing strategies.

Measure realized savings

- **View all categories and projects** in one place to see a full picture of spend and financial impact.
- **Monitor monthly spending** to ensure that vendors are fulfilling pricing commitments and that no unexpected costs are eroding savings.
- **Track progress** toward savings goals, ensure decision compliance over time and monitor for denied products captured in your PO spend.



"Lumere provides a **direct comparison** of products based on evidence, outcomes and technologies. This leads to **clinically integrated decisions** regarding sourcing strategies and vendor negotiation tactics, along with key insights to support clinical decision making, enhance outcomes and realize savings."

– **Executive director** at a nationally recognized health system alliance

Try us for two weeks!

Sign up for complimentary access to Lumere's solutions.
Visit [Lumere.com/complimentary-access](https://lumere.com/complimentary-access)